

**ITEM 65. PARKING - CHIPPENDALE PARKING CHANGES - BALFOUR
STREET CHIPPENDALE - SOUTH OF MEAGHER STREET**

TRIM RECORD NO: 2015/035573

RECOMMENDATION

It is recommended that the Committee endorse the allocation of parking on Balfour Street, Chippendale as follows:

- (A) Eastern side between the points 12.5 metres and 100.8 metres (15 car spaces) south of Meagher Street as "2P Ticket 8am-10pm Permit Holders Excepted Area 24".
- (B) Western side between the points 13.3 metres and 45.8 metres (5 car spaces) north of Cleveland Street as "2P Ticket 8am-10pm Permit Holders Excepted Area 24".
- (C) Western side between the points 7.4 metres and 36.1 metres (5 car spaces) north of Bartley Street as "2P Ticket 8am-10pm Permit Holders Excepted Area 24".
- (D) Western side between the points 36.1 metres and 47.7 metres (2 car spaces) north of Bartley Street as "Loading Zone 7am-6pm Mon-Fri, 7am-10am Sat" and "2P Ticket 6pm-10pm Mon-Fri, 10am-10pm Sat, 8am-10pm Sun and Public Holidays, Permit Holders Excepted Area 24".

DECISION

BACKGROUND

On 12 May 2014, Council resolved to "...review the adequacy of existing parking controls in Chippendale to ensure they balance the needs of residents, visitors and local business in light of changing land uses".

The type and intensity of land use in and near Chippendale is undergoing major change. New housing, education, retail and commercial projects have been completed or are under construction. Within the existing built fabric, new galleries, offices, restaurants and cultural facilities have been established. These changes inevitably increase competition for limited street parking spaces used by residents, visitors, customers and business.

In August 2014, the City wrote to more than 3,400 proprietors in Chippendale seeking feedback on a proposal to extend timed parking to 10pm seven days a week in the area bounded by Cleveland Street, Regent Street, City Road and Broadway.

Timed permit parking in the area east of Abercrombie Street is currently 2P Ticket 8am-6pm seven days a week with an exemption for permit holders.

West of Abercrombie Street, it was proposed to introduce two hour (2P) restrictions without a permit exemption, into a number of currently unrestricted streets.

Following assessment of feedback, it is recommended that the proposal be modified to not proceed with proposed restrictions in currently unrestricted streets west of Abercrombie Street, to introduce off-peak parking restrictions favouring permit holders after loading zone hours expire (evenings and weekends), and to formalise an area for motorcycle parking.

The modified proposal was subsequently adopted by Council at its meeting on 8 December 2014 subject to endorsement by the Local Pedestrian, Cycling and Traffic Calming Committee. Council resolved the following:

- (A) extension of parking restrictions east of Abercrombie Street to 2P Ticket, 8am-10pm, seven days, and that exemptions for permit holders be maintained where they currently exist;
- (B) introduction of additional permit holder exemptions on the northern kerb of Queen Street between points 10 and 20 metres west of Regent Street, and between points 10 and 25 metres west of Balfour Street on the northern kerb of Little Queen Street;
- (C) introduction of timed weekend and/or evening parking restrictions to kerb space currently signposted as Loading Zone; and
- (D) establishment of a weekday motorcycle-only parking zone on Daniels Street.

COMMENTS

The majority of the kerb space on of Balfour Street, Chippendale between Meagher and Cleveland Streets is currently 2P Ticket 8am-6pm Mon-Fri with an exemption for permit holders. However there is a "Loading Zone 7am-6pm Mon-Fri, 7am-10am Sat".

Most of the kerb space will be changed to "2P Ticket 8am-10pm Permit Holders Excepted Area 24" in accordance with the Resolution of Council from 8 December 2014.

The other kerb space will be changed to "Loading Zone 7am-6pm Mon-Fri, 7am-10am Sat" and "2P Ticket 6pm-10pm Mon-Fri, 10am-10pm Sat, 8am-10pm Sun and Public Holidays, Permit Holders Excepted Area 24". This will introduce a timed weekend and evening parking restriction to kerb space currently signposted as Loading Zone in accordance with the Resolution of Council from 8 December 2014.

The proposed changes would limit any vehicle which does not have a permit to two (2) hours of parking where the signs are installed.

Residents with an Area 24 (Chippendale) parking permit will be exempt from the 2 hour time limit and the ticket parking charges where the exemption applies.

CONSULTATION

The City consulted local residents and business in the area. There were over 3,400 letters sent out with 107 submissions received.

FINANCIAL

Funds are available in the current budget.

ATTACHMENTS

Parking - Chippendale Parking Changes - Balfour Street Chippendale – South of Meagher Street

Michael Rimac - Engineering Traffic Officer

Proposed
Loading Zone
 7am-6pm Mon-Fri
 7am-10am Sat

2P Ticket
 6pm-10pm Mon-Fri
 10am-10pm Sat
 8am-10pm Sun
 & Public Holidays
Permit Holders
Excepted Area 24
(2 Car Spaces)

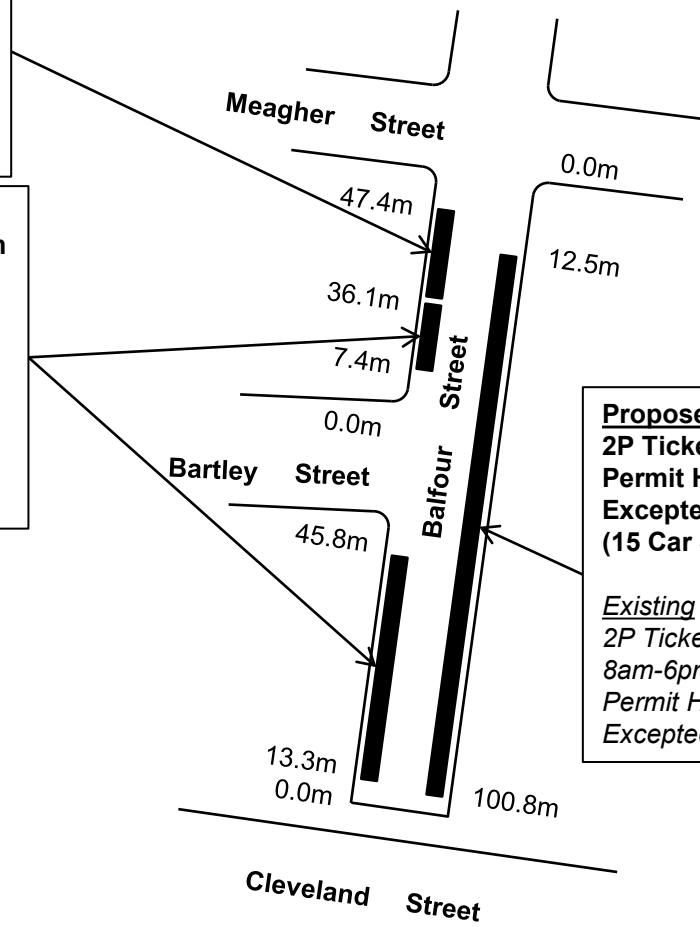
Existing
Loading Zone
 7am-6pm Mon-Fri
 7am-10am Sat

Proposed
2P Ticket 8am-10pm
Permit Holders
Excepted Area 24
(10 Car Spaces)

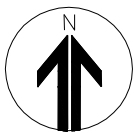
Existing
2P Ticket 8am-6pm
Permit Holders
Excepted Area 24

Proposed
2P Ticket 8am-10pm
Permit Holders
Excepted Area 24
(15 Car Spaces)

Existing
2P Ticket
8am-6pm Mon-Fri
Permit Holders
Excepted Area 24



PROPOSAL



BALFOUR STREET, CHIPPENDALE - South of Meagher St
 CHIPPENDALE PARKING REVIEW



